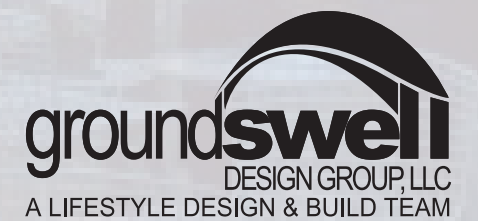


Pocket Park Roxborough



...local student involvement

...street music: jazz, acoustic guitar

**...share network with other organizations-YMCA,
INERAC, Northern Lights, Art Center**

**...colorful tables (to play
games etc..)**

***...participation of area
students***

COMMUNITY

...community volunteer

**...needs to be a destination for
people outside of the community**

...local artists

...evening lights

...volunteer maintenance

...native plants to attract birds and butterflies

...wall mural

...comfortable benches

...space for public events: music, movies, performance

...artistic hardscaping

PARK

...tables and chairs

...small areas for more intimate gathering

...relax

...views from Ridge Avenue

...read

...good for all age groups

**...experiences for individuals
and groups**

...fresh food

...twilight movie nights

...yoga

ACTIVATE

...pop-up food cart days

...music

***...food cart-made to order
donuts/coffee***

...exploration section

**...ease of movement
through/into space**

...storm water

...pervious pavers

*...runoff collection for maintaining/
watering plants*

...rain garden

SUSTAINABLE

...clean up days

...native plants

...stormwater planters

**...locally sourced
materials**

...tree canopy

...exposed brick

...historic wall mural

...plaque displaying information
relevant to area

...then and now collage (photo)

*...educational
sign*

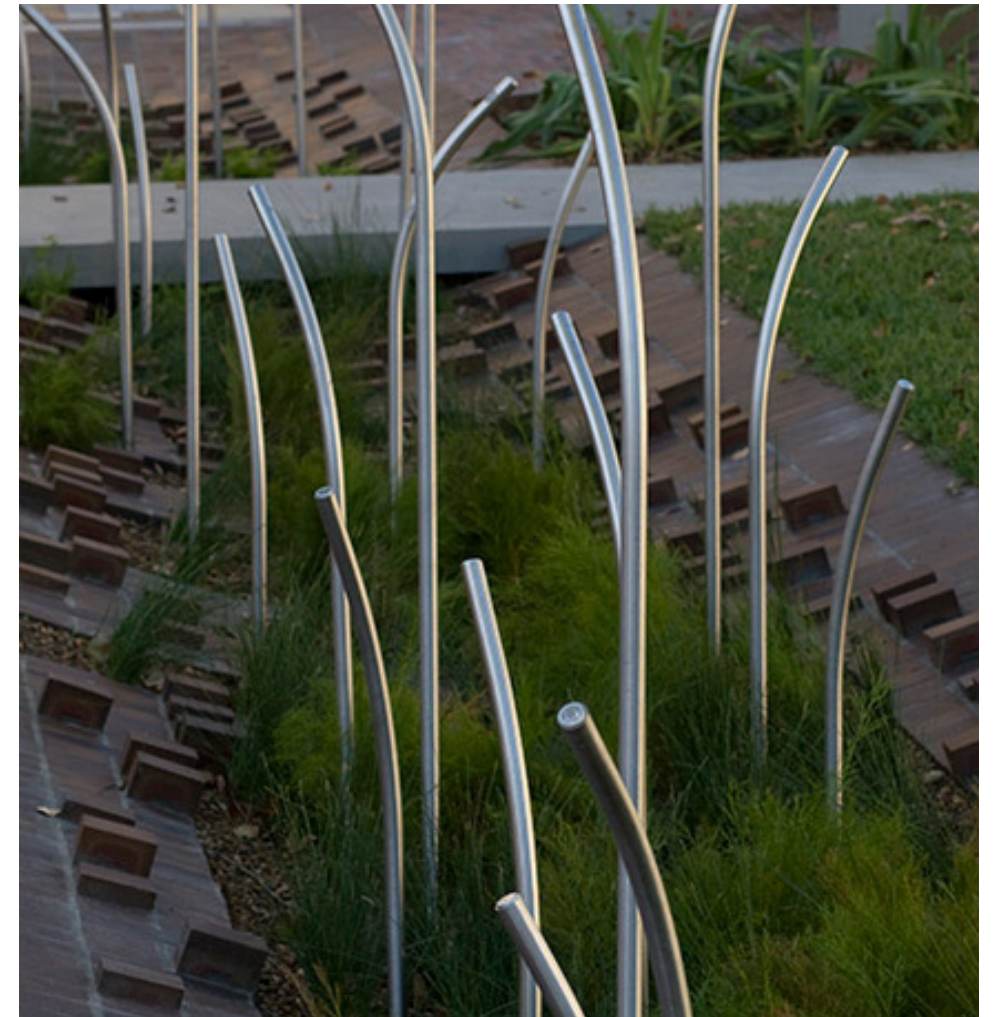
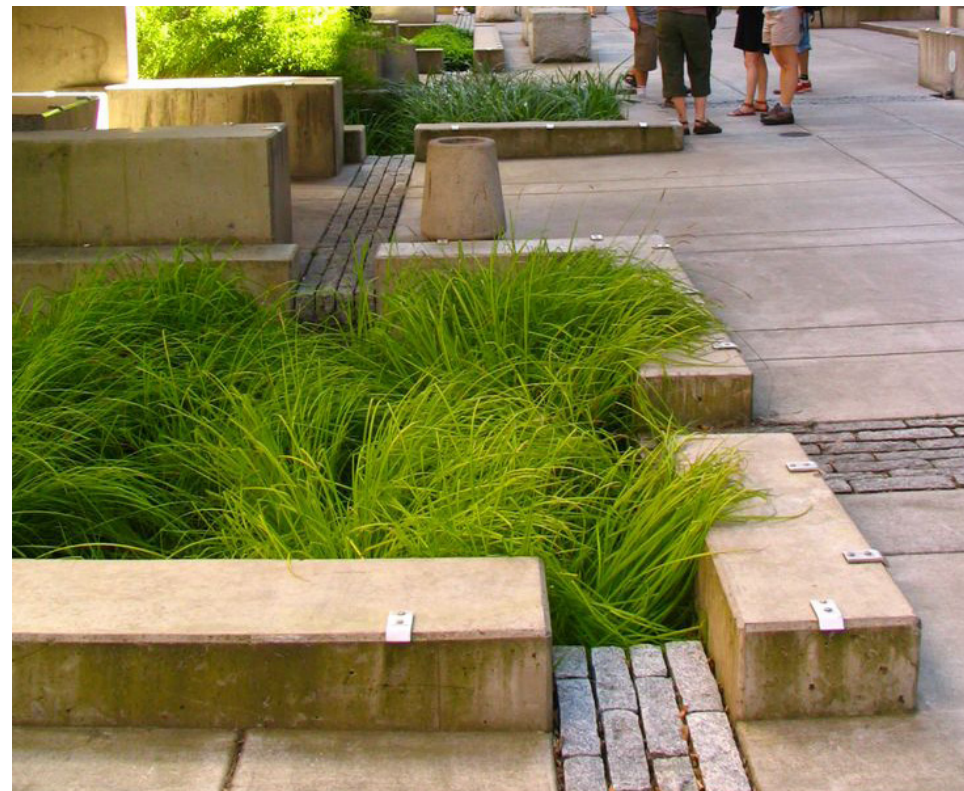
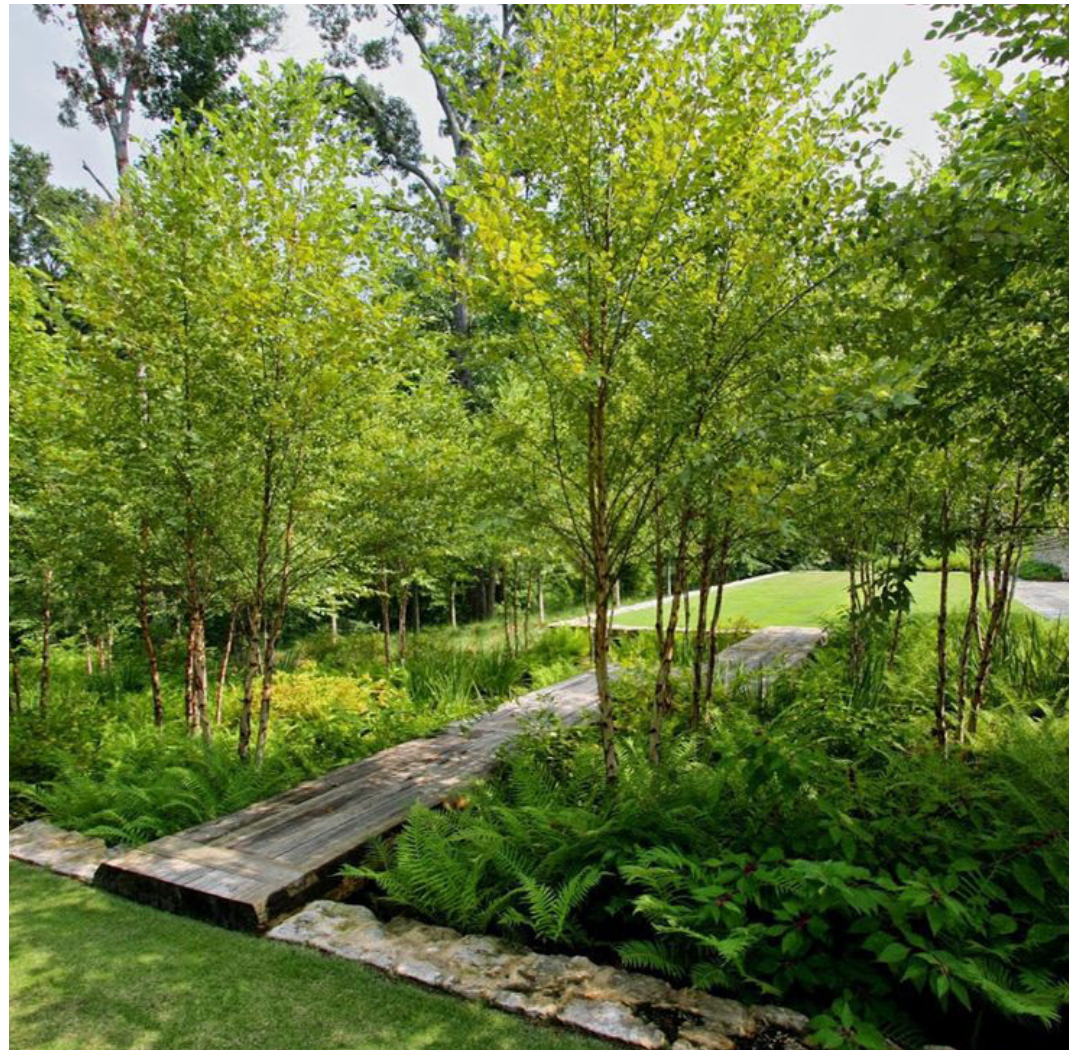
HISTORY

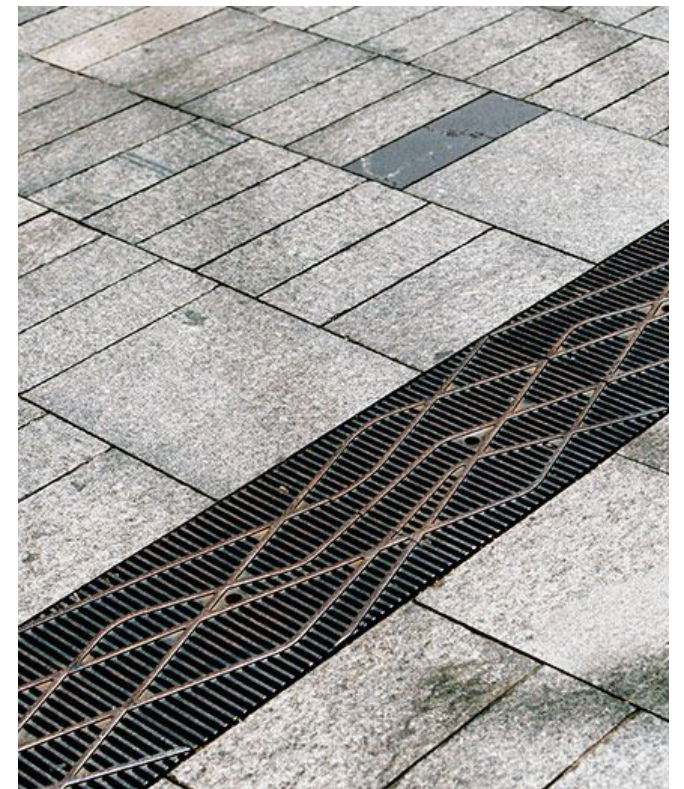
...history important but design should be
contemporary as well

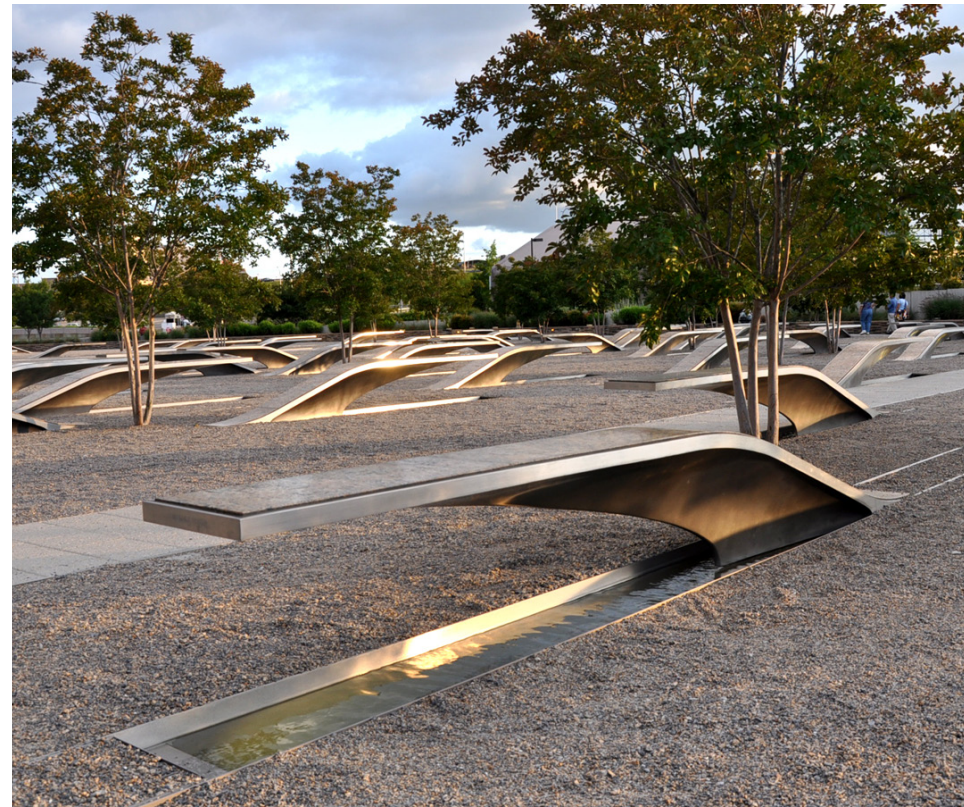
...roxborough history

*...connect history with future
of neighborhood*

...projector







Trees



Betula lenta



Gleditsia triacanthos



Cupressus nootkatensis



Cornus florida



Magnolia virginiana



Shrubs



Hydrangea arborescense 'annabelle'



Viburnum dentatum



Illex verticillata



Lindera benzoin

Perennials



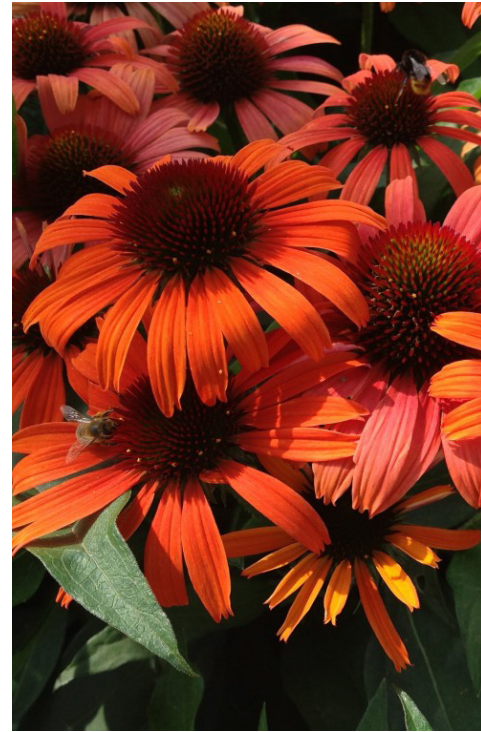
Sedum spectabile 'Autumn Joy'



Rudbeckia laciniata



Lobelia cardinalis



Echinacea butterfly 'Orange Skipper'



Mertensia virginica



Eupatorium fistulosum

Grasses



Pennisetum alopecuroides



Festuca glauca 'Elijah Blue'



Carex pennsylvanica



Chasmanthium latifolium



Panicum virgatum 'Prairie fire'



Juncus effusus



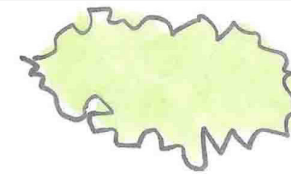
BUBBLE DIAGRAM:

PLACE MENT OF GARDENS/
CIRCULATION PATHS TO
CREATE FEELING OF
SMALLER SPACES

flex = stage or
gathering/
casual seating



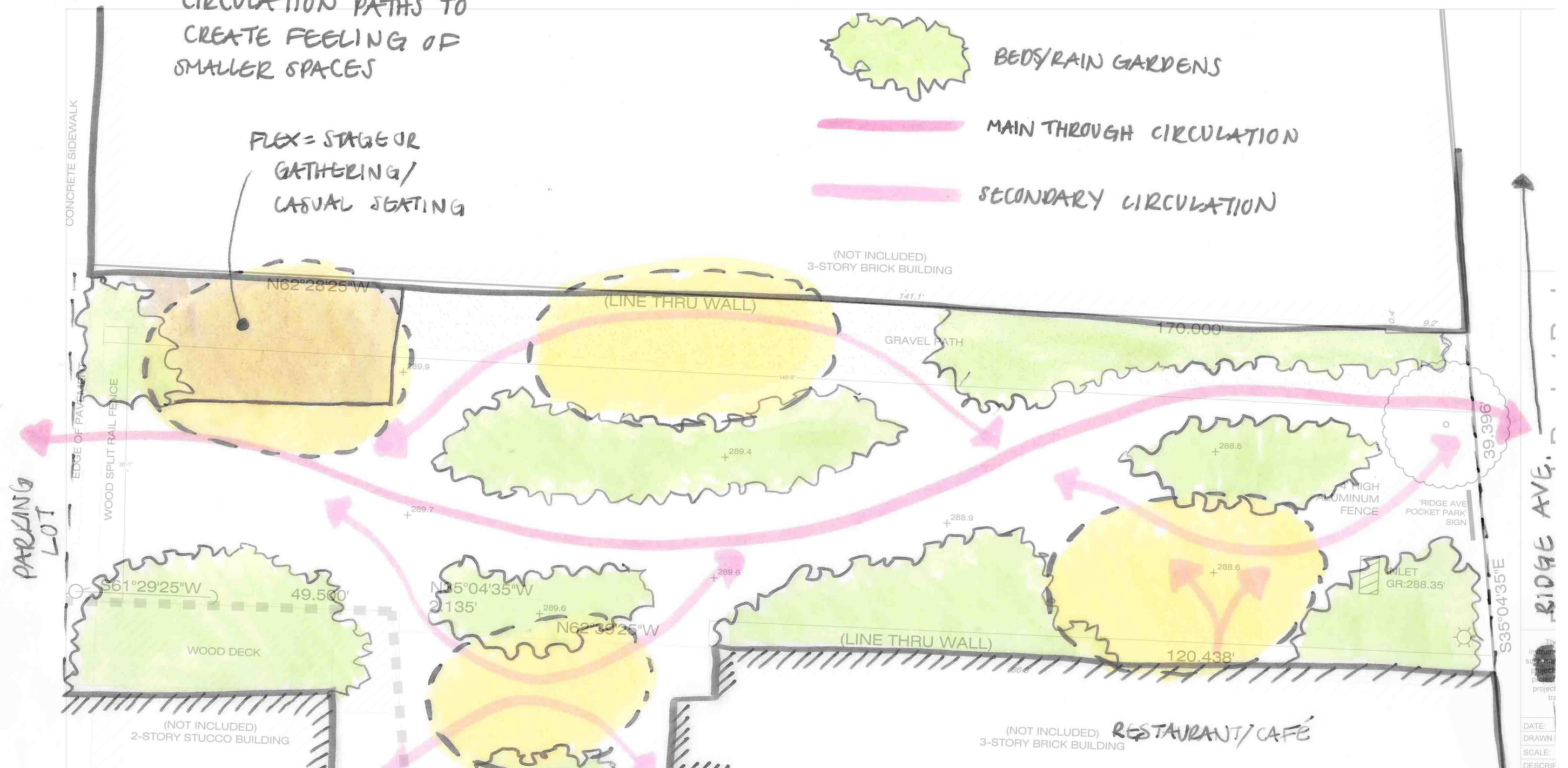
"POCKETS" OF SEATING/
MORE PRIVATE AREAS



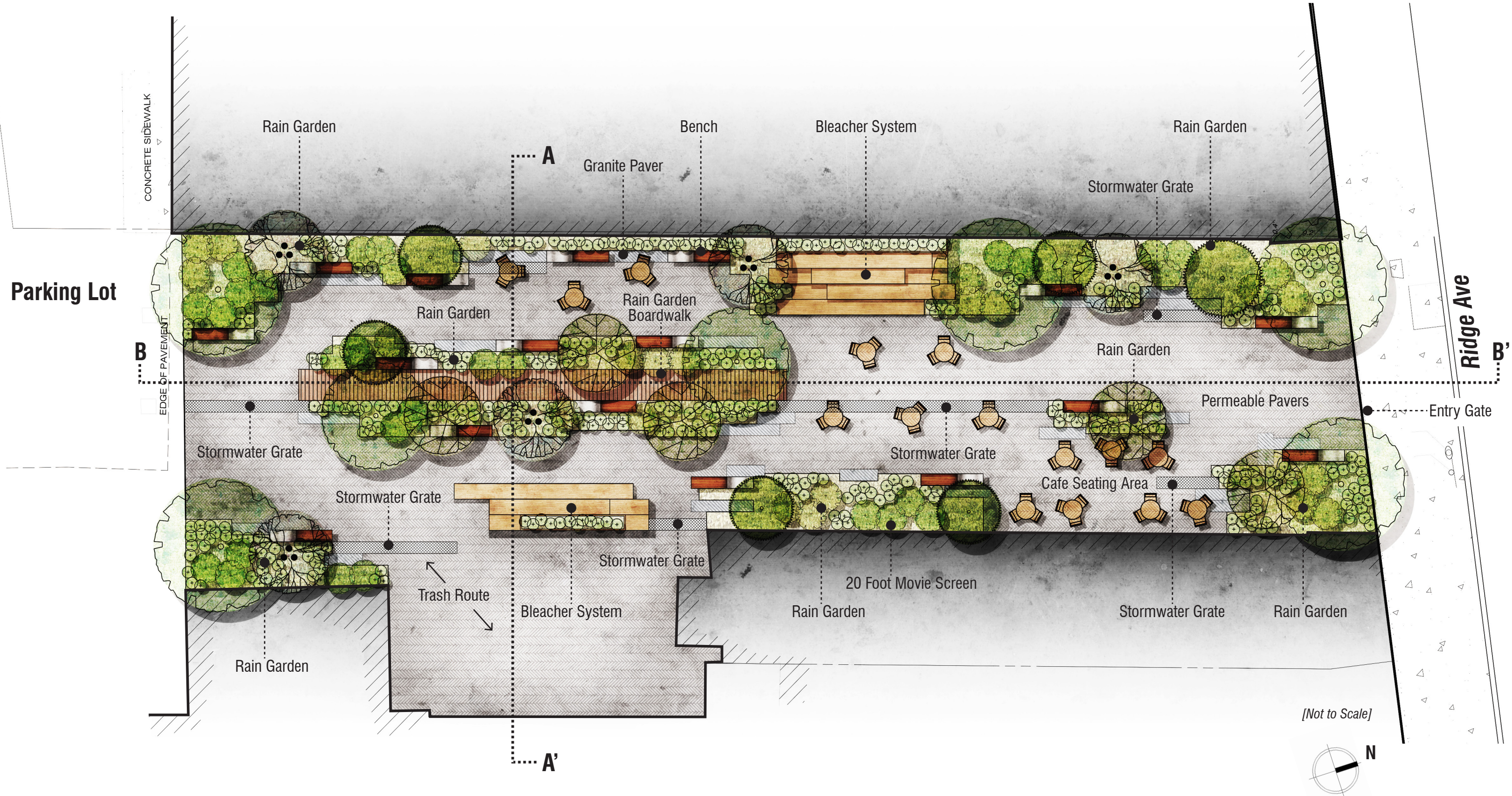
BEDS/RAIN GARDENS

MAIN THROUGH CIRCULATION

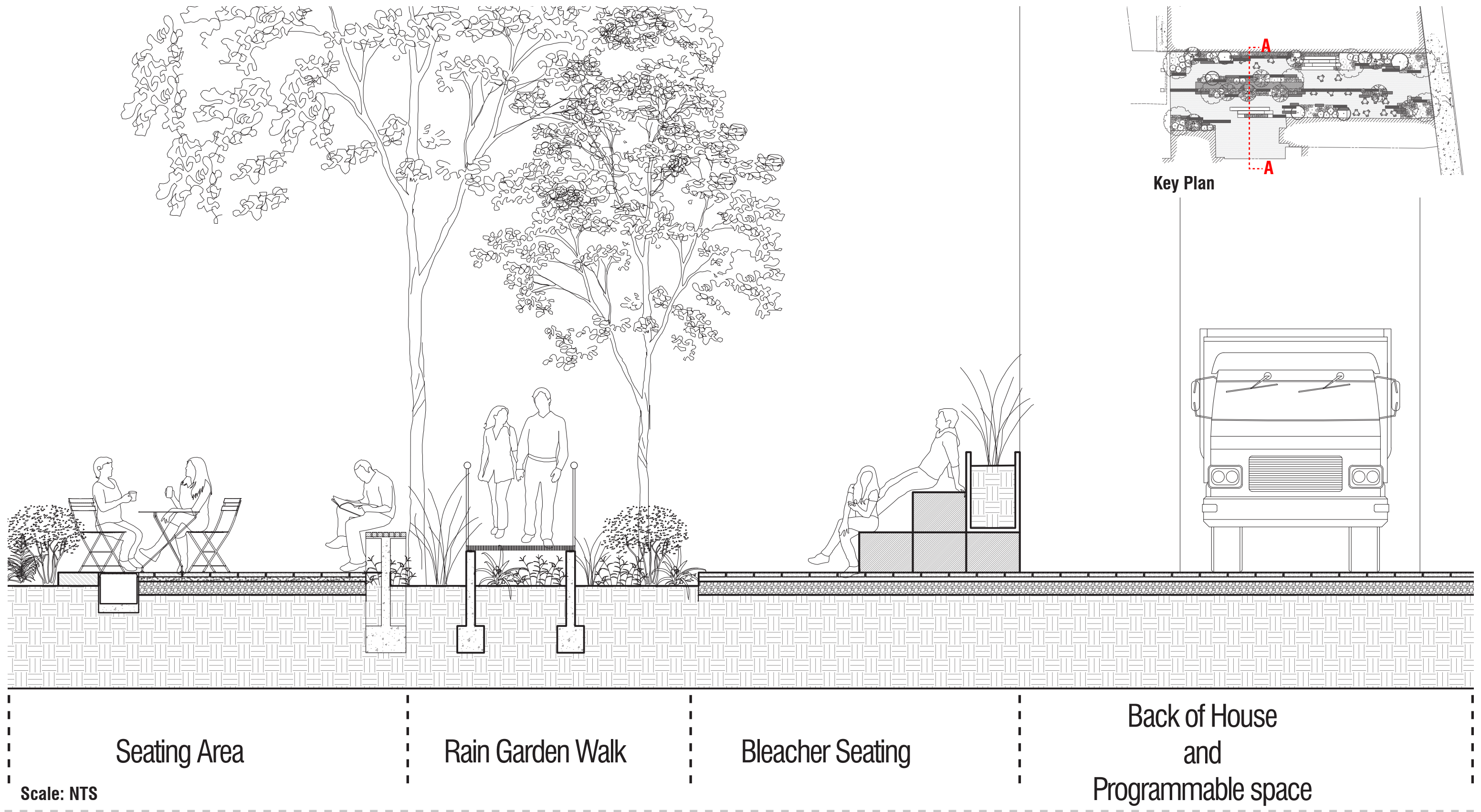
SECONDARY CIRCULATION



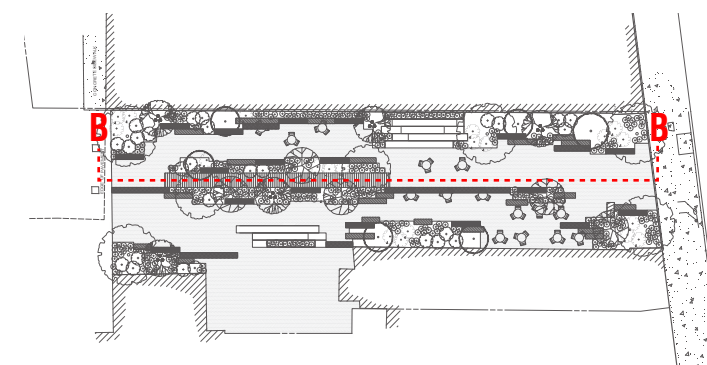




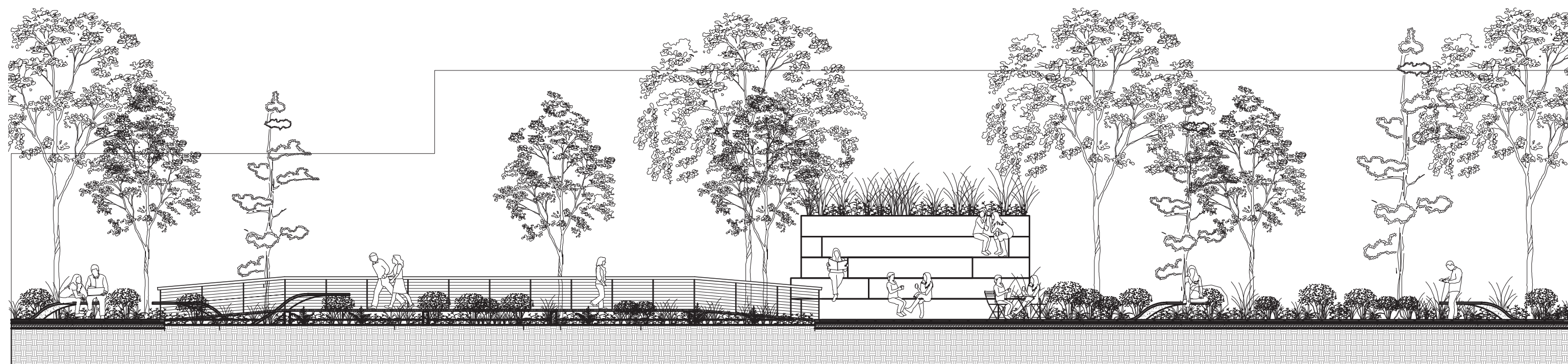
Roxborough Pocket Park | Site Plan



Roxborough Pocket Park | Site Section (A)



Key Plan



Parking Lot
Entrance

Rain Garden Walk

Bleacher
Seating

Cafe Seating, Rain Gardens,
and Ridge Ave. Entrance

Scale: NTS

PARKING

RIDGE AVE





Garden Walk



Food Cart & Truck Vendors



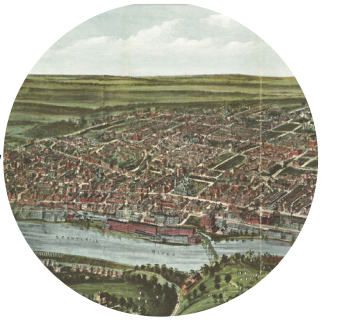
*Programmed Activities
(Yoga, Farmers Market, etc...)*



Movie Projections



Rain Garden



History Mural



Stadium Style Seating



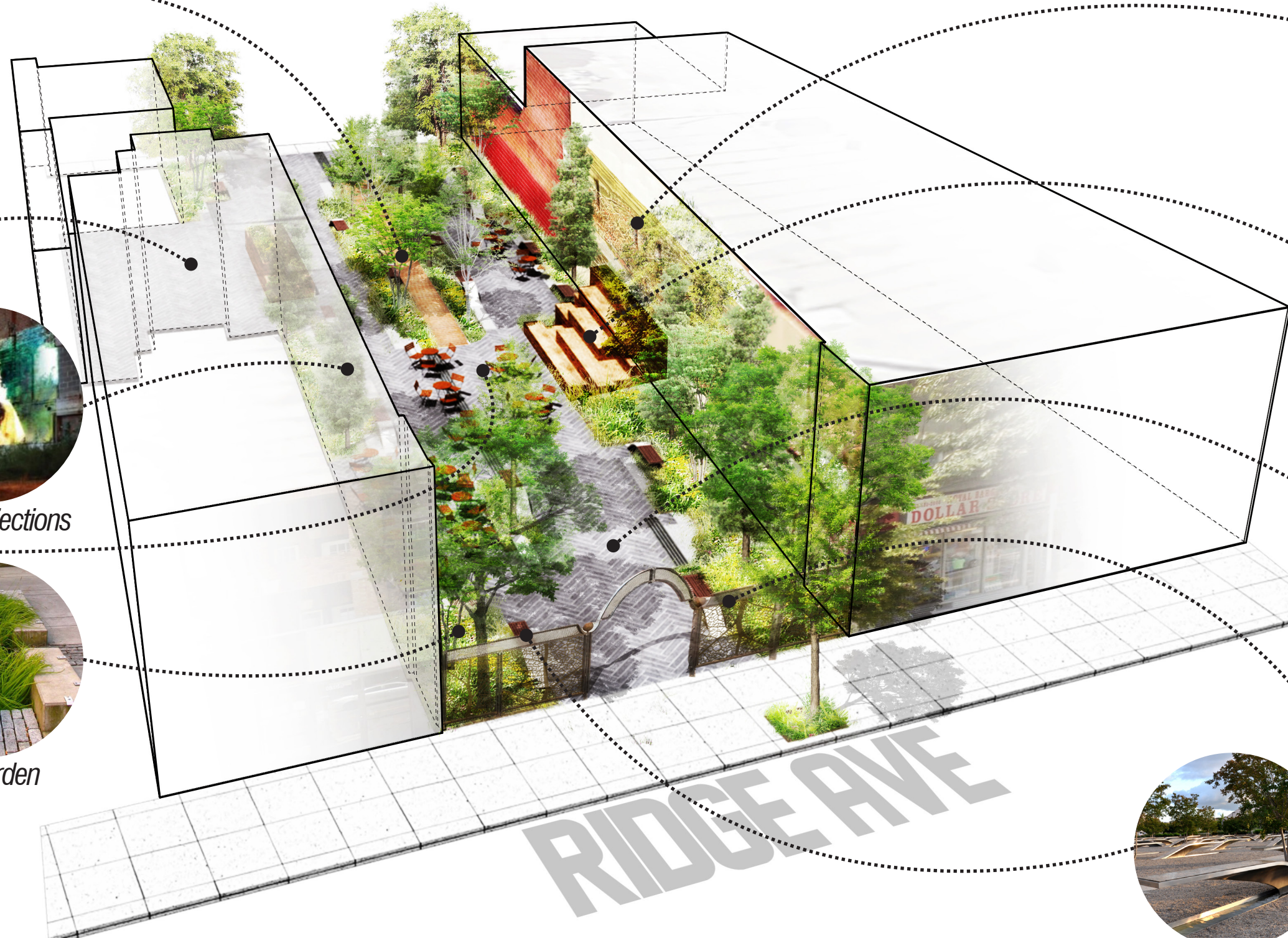
Permeable Pavers

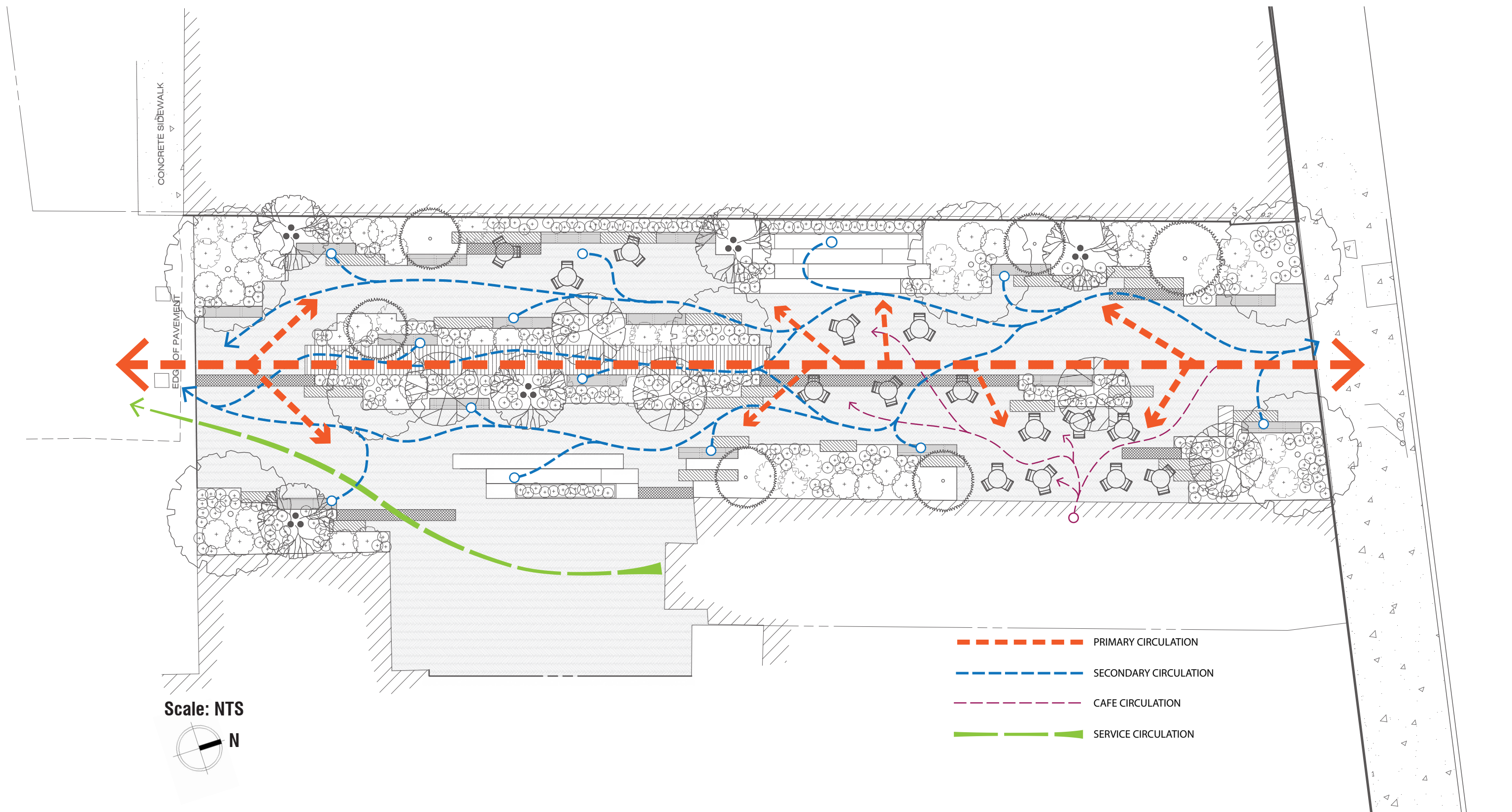


Artistic Entrance

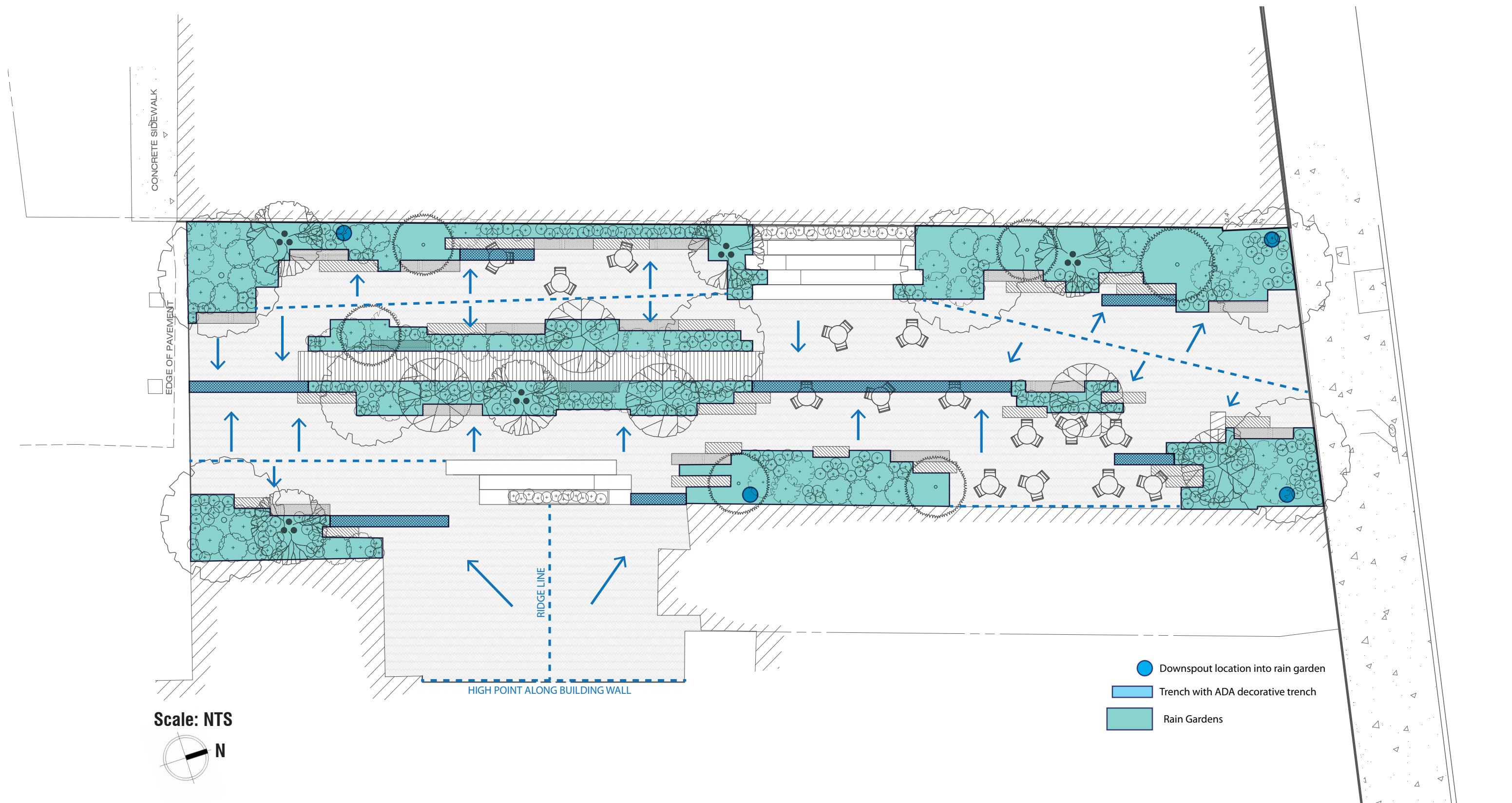


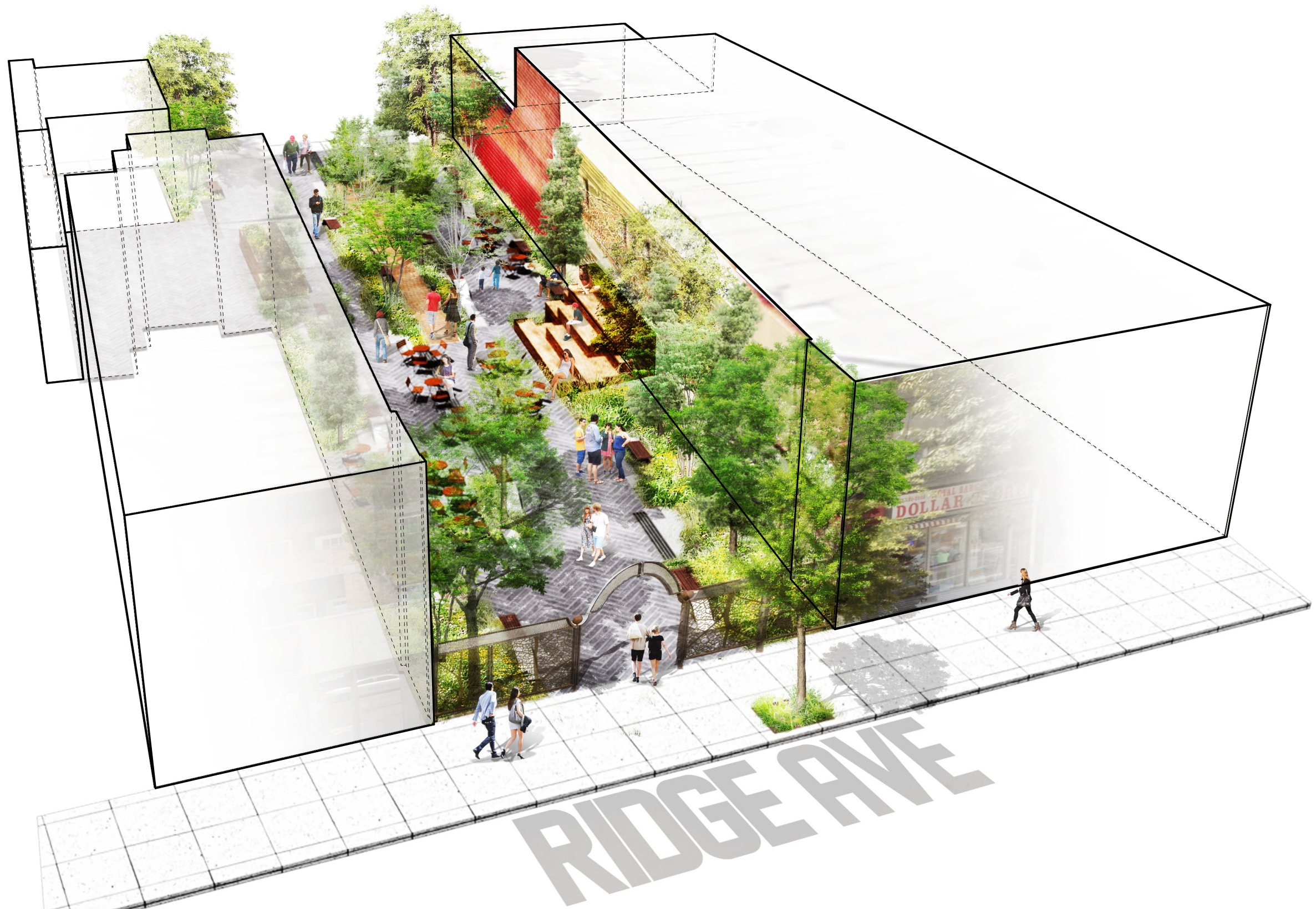
Comfortable Seating





Roxborough Pocket Park | Circulation Diagram





Roxborough Pocket Park | Axonometric Plan