



Manayunk • Philadelphia, PA

# 6128 RIDGE AVENUE

LANDMARK TURN OF THE CENTURY BANK BUILDING





Manayunk • Philadelphia, PA

# 6128 RIDGE AVENUE

Landmark Turn of the Century Bank Building

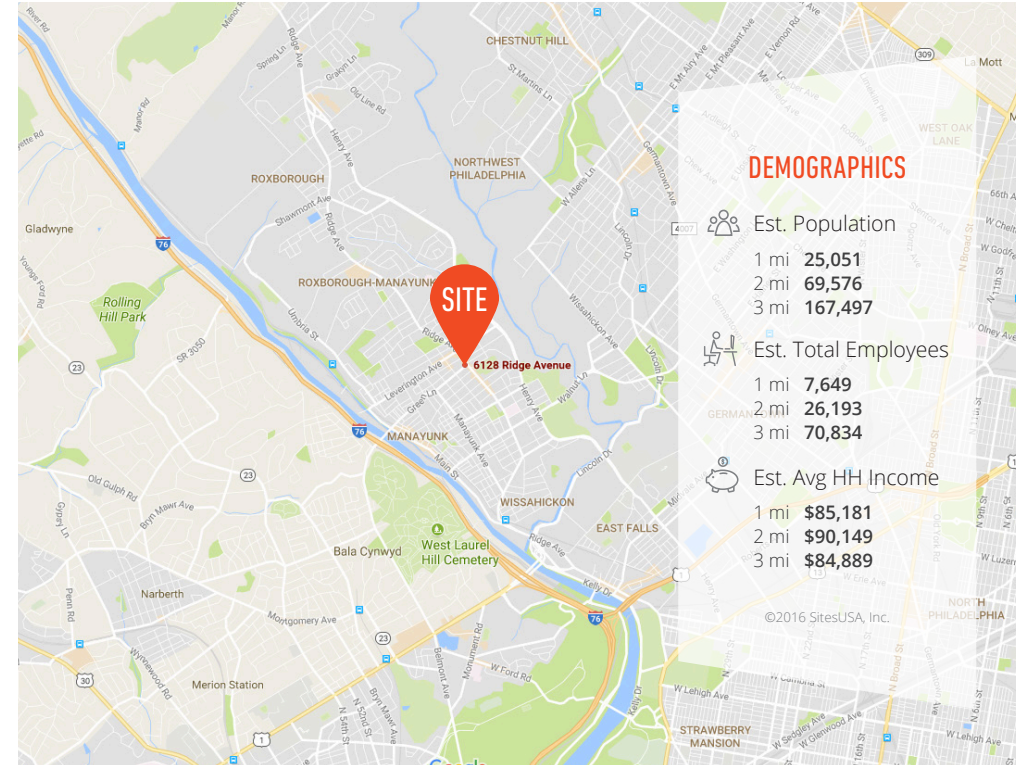
For more info, please contact:

**DAN HISTON**

dhiston@MSCretail.com  
215.268.2600 x724

**JACOB COOPER**

jcooper@MSCretail.com  
215.883.7402



## PROPERTY DETAILS

- ▶ Prime location on heavily trafficked Ridge Avenue (26,000 AADT), the main retail corridor of Roxborough
- ▶ Densely populated residential area with strong retail synergy
- ▶ Ample pedestrian/vehicular traffic and dense residential demographics

## JOIN THESE AREA TENANTS





Manayunk • Philadelphia, PA

# 6128 RIDGE AVENUE

Site Plan

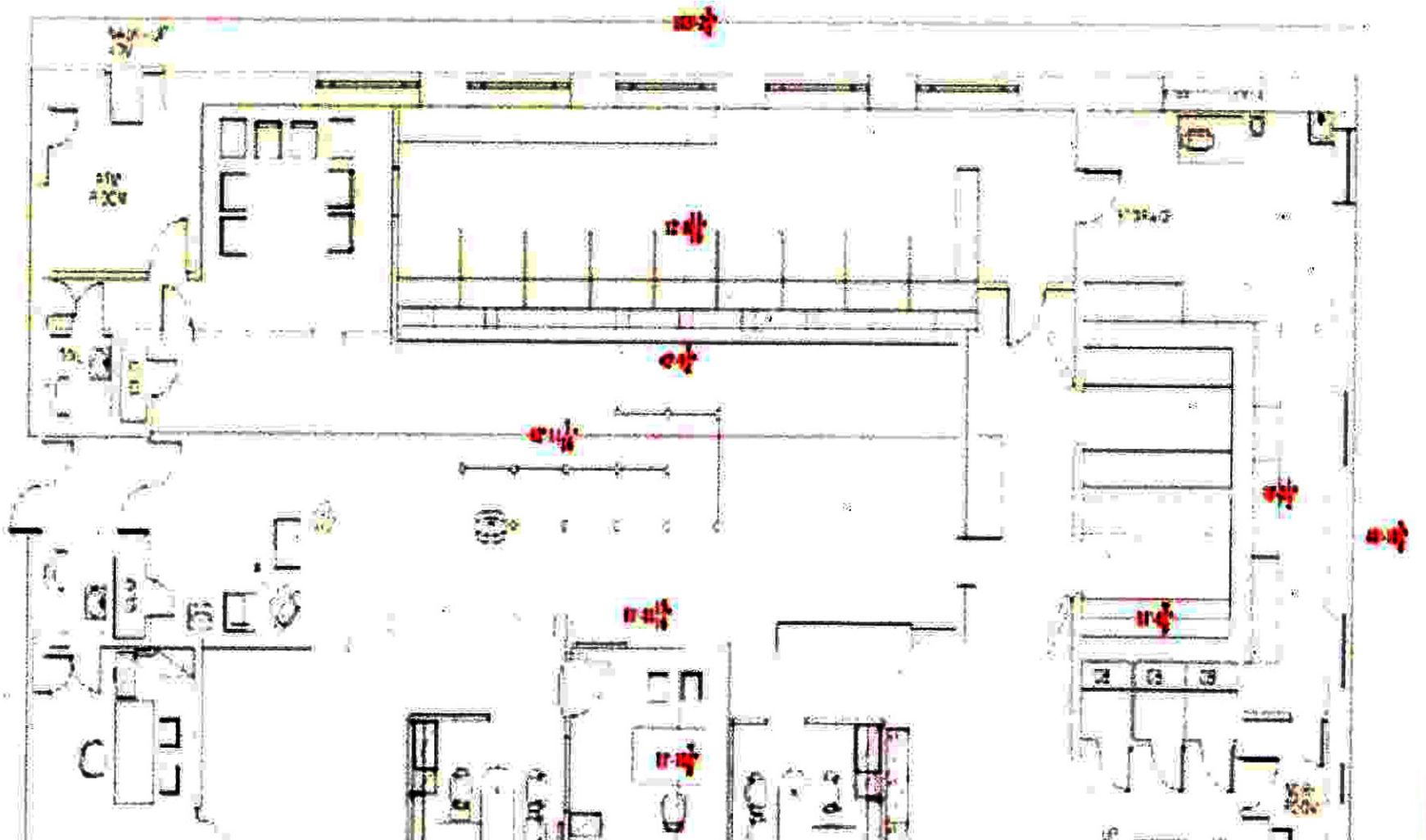
For more info, please contact:

**DAN HISTON**

dhiston@MSCretail.com  
215.268.2600 x724

**JACOB COOPER**

jcooper@MSCretail.com  
215.883.7402







Manayunk • Philadelphia, PA

# 6128 RIDGE AVENUE

Aerial

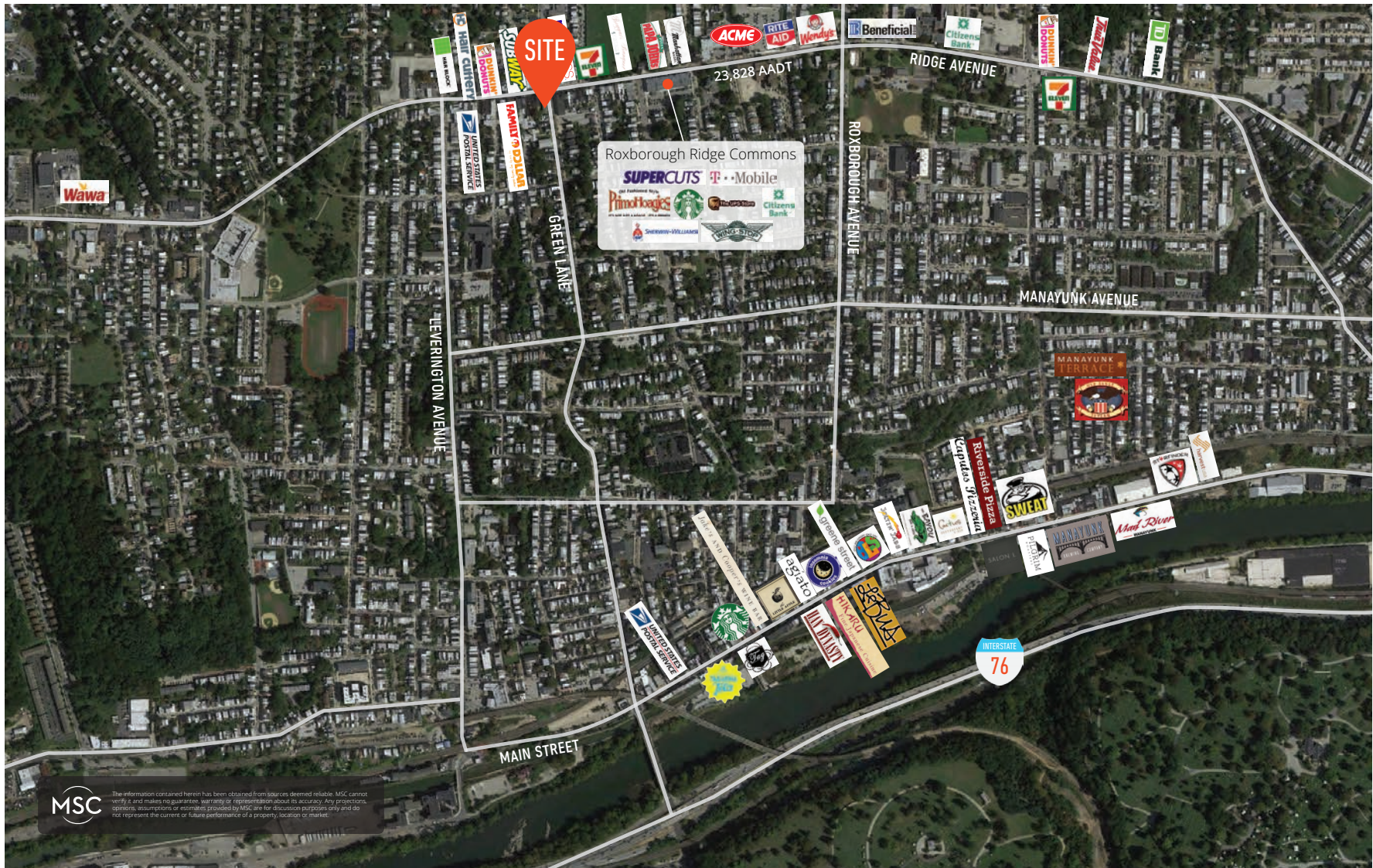
For more info, please contact:

**DAN HISTON**

dhiston@MSCretail.com  
215.268.2600 x724

**JACOB COOPER**

jcooper@MSCretail.com  
215.883.7402



The information contained herein has been obtained from sources deemed reliable. MSC cannot verify it and makes no guarantee, warranty or representation about its accuracy. Any projections, opinions, assumptions or estimates provided by MSC are for discussion purposes only and do not represent the current or future performance of a property, location or market.