



## 2020 RIDGE AVENUE LANDSCAPING REQUEST FOR PROPOSAL

### Scope of Work

The Roxborough Development Corporation (RDC) is seeking proposals for landscaping and maintenance services along the Ridge Avenue Commercial Corridor. The scope of work has been subdivided into three sections. **Part I** will include the planting, watering and maintenance of streetscape planters along Ridge Avenue. **Part II** includes landscaping services in area parking lots. **Part III** includes landscaping services for street tree pits along the corridor.

Maintenance plans, plant materials, watering schedules and procedures should be presented by interested contractors and discussed with the RDC. Pricing should be separated by Part I, Part II and Part III with line item pricing for each subsection. For questions about the proposal, please contact [linda@roxboroughpa.com](mailto:linda@roxboroughpa.com).

### Instructions for Submission

Proposals must be submitted to the RDC by **Friday, February 28, 2020**. Proposal can be submitted electronically to [linda@roxboroughpa.com](mailto:linda@roxboroughpa.com) or delivered in person to the RDC's office at 6120 Ridge Avenue, Philadelphia, PA 19128. Contractors will be notified of selection by **Friday, March 6, 2020**.

### About the Roxborough Development Corporation

Ridge Avenue is the neighborhood commercial corridor for the Roxborough community. The RDC's Board, volunteers, and staff have been working hard since 1992 to enhance Ridge Avenue by promoting special events, beautifying and cleaning Ridge Avenue, helping existing business to expand while recruiting new ones, and marketing and communicating about the corridor and the organization throughout the year.

The Roxborough Development Corporation works to provide Roxborough residents with high quality shopping, dining and entertainment experiences. For more information, visit [www.roxboroughpa.com](http://www.roxboroughpa.com).

## PART I: Ridge Avenue Planters

### A. Streetscape Planters

- Approx. 80 Streetscape planters (in groups of one, two or three boxes) along Ridge Avenue from Rector Street to Ripka Street
- Provide proposed plant materials, timeframe, and budgets for two planting options: 1) One-time installation (April-Sept) and 2) Three seasonal installations
- Remove all existing soil, inspect planters and fix or replace broken or missing parts, including tubes and stoppers
- Clean and maintain planter exteriors as needed, including new paint
- Replace damaged or dead shrubs as identified by the RDC
- Refill planters to capacity with all new premium soil
- Install new plantings as approved by the RDC
- Planters to be inspected for once a week including cleared of all trash, weeded watered. Planters to be watered once a week or as needed to sustain optimal conditions of plants

### B. Basix Planters

- Approx. 50 Basix planters from Main Street to Domino Lane
- Provide proposed plant materials, timeframe, and budgets for two planting options: 1) One-time installation (April-Sept) and 2) Three seasonal installations
- Remove all existing soil, inspect planters and fix or replace broken or missing parts, including tubes and stoppers
- Clean and maintain planter exteriors as needed, including new paint
- Replace damaged or dead shrubs as identified by the RDC
- Refill planters to capacity with all new premium soil
- Install new plantings as approved by the RDC
- Planters to be inspected for once a week including cleared of all trash, weeded watered. Planters to be watered once a week or as needed to sustain optimal conditions of plants





## **PART II: Parking Lot Planter Beds**

### **A. Rochelle Street Island**

- Remove all winter mulches, composts and weeds
- Re-mulch bed
- Provide price for additional seasonal mulching and cutback

### **B. 514 DuPont Street Shopper's Parking Lot**

- Three mulching beds approximately 300 square feet
- Prune damaged branches and dead wood on woody shrubs and trees
- When ground has thawed out, start digging/prepping new beds for mulch application Remove all winter mulches
- Re-mulch all beds as per owner selection
- Provide price for additional seasonal mulching and cutback

### **C. 465 Leverington Avenue Shopper's Parking Lot**

- Four mulching beds approximately 800 square feet
- Prune damaged branches and dead wood on woody shrubs and trees
- When ground has thawed out, start digging/prepping new beds for mulch application
- Remove all winter mulches
- Re-mulch all beds as per owner selection
- Provide price for additional seasonal mulching and cutback

### **D. 6001 Ridge Avenue/ Monastery Avenue Parking Lot**

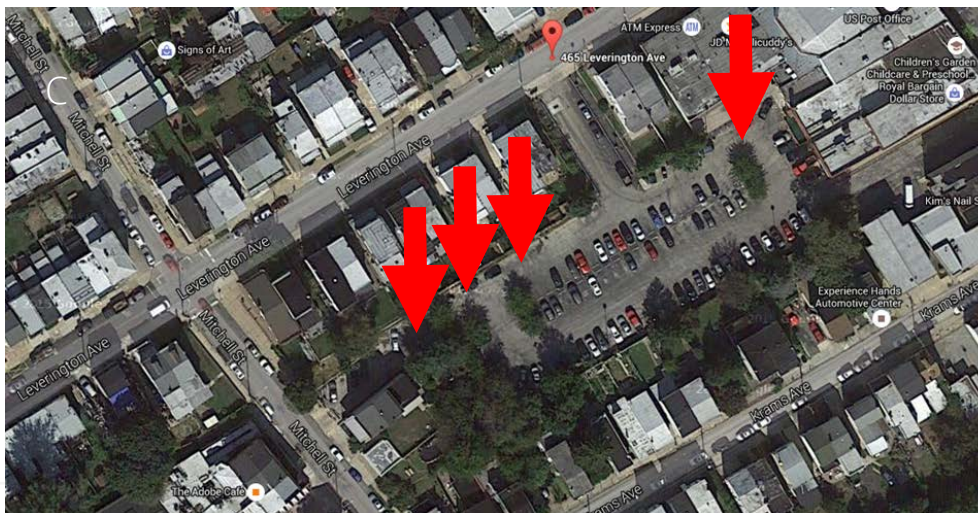
- Four mulching beds approximately 800 square feet
- Prune damaged branches and dead wood on woody shrubs and trees
- When ground has thawed out, start digging/prepping new beds for mulch application
- Remove all winter mulches
- Re-mulch all beds as per owner selection
- Provide price for additional seasonal mulching and cutback

### **E. 6109 Ridge Avenue/ Conarroe Street Parking Lot**

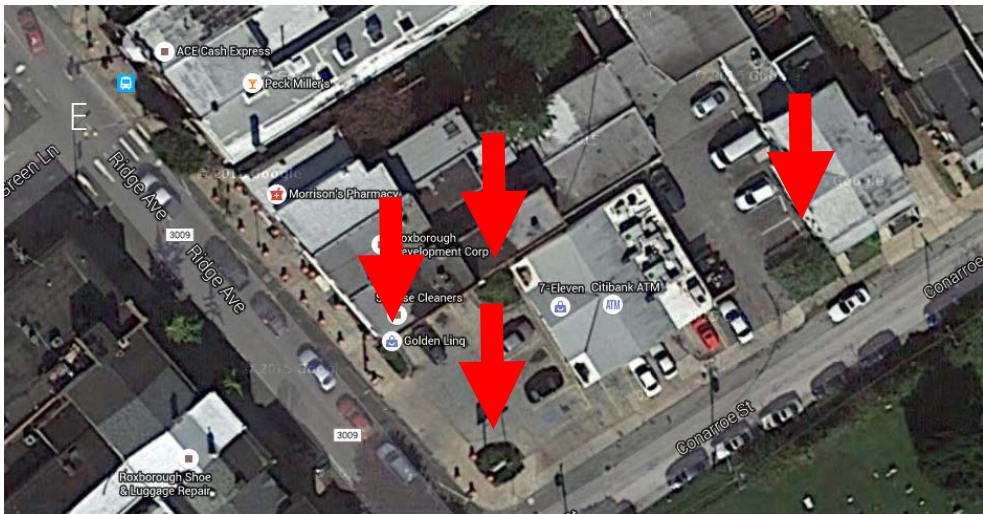
- Four mulching beds approximately 800 square feet
- Prune damaged branches and dead wood on woody shrubs and trees
- When ground has thawed out, start digging/prepping new beds for mulch application
- Remove all winter mulches



- Re-mulch all beds as per owner selection
- Provide price for additional seasonal mulching and cutback







## PART III: Ridge Avenue Street Trees

### A. Street Trees

- 120 street trees from Main Street to Domino Lane
- When ground has thawed out, start digging/prepping new beds for mulch application flush with sidewalk
- Remove all winter mulches and composts
- Re-mulch all tree pits as per owner selection
- Provide price for additional seasonal mulching

